

MONTHLY MEMBERSHIP PROGRESS REPORT

LOCATION MICHIGAN

District 10

Results as of: 5/31/2023

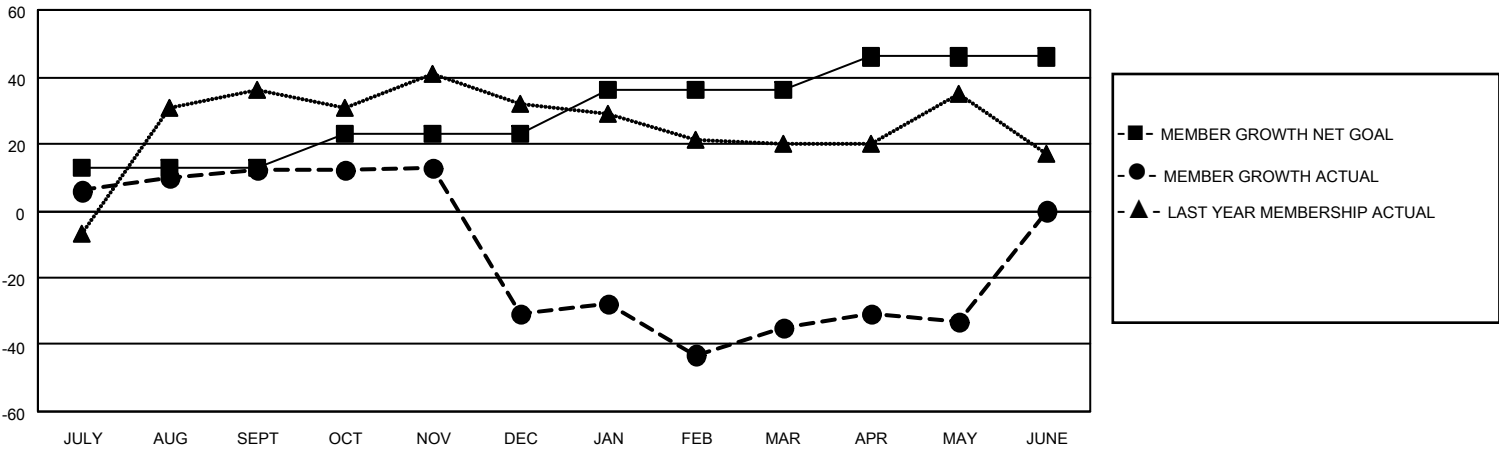
Clubs			
RESULTS FOR 2022-2023			
QUARTER	NEW CLUB GOAL	NEW CLUBS	DROPPED CLUBS
JULY/AUG/SEPT	0	0	0
OCT/NOV/DEC	1	0	0
JAN/FEB/MAR	0	0	1
APR/MAY/JUNE	1	0	0

Members			
RESULTS FOR 2022-2023			
QUARTER	MEMBER GROWTH NET GOAL	MEMBER GROWTH ACTUAL	DROPPED MEMBERS ACTUAL (including transfers)
JULY/AUG/SEPT	13	36	16
OCT/NOV/DEC	10	34	77
JAN/FEB/MAR	13	43	44
APR/MAY/JUNE	10	19	15

GOALS AND ACTUAL NEW CLUBS CUMULATIVE



GOALS AND ACTUAL MEMBERS CUMULATIVE



DROPPED CLUBS: 1

32 CLUBS OF 49 ADDED 1 OR MORE NEW MEMBERS

GENDER DISTRIBUTION

MALE	885 (67.76%)
FEMALE	421 (32.24%)
NON BINARY	0 (0.00%)
PREFER NOT TO ANSWER	0 (0.00%)

DROPPED MEMBERS

[CLICK HERE FOR CUMULATIVE MEMBERSHIP DATA](#)

DECEASED	34
CLUB CANCELLED	0
OTHER	118
TOTAL	152

TOTAL FAMILY UNIT MEMBERS	197
FAMILY MEMBERS PAYING HALF DUES	99